



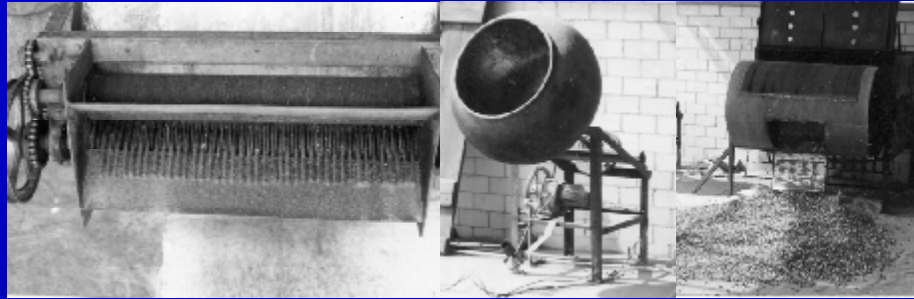
WELCOME TO LA JOSEFINA

*D.P.C. La Josefina S.A. de C.V.
54 Poniente No. 308 Col. Cuauhtémoc
C.P. 72243 Puebla, Pue. México.
Teléfono +52 (222) 220 09 70 , 220 08 88
Fax +52 (222) 220 47 34
www.la-josefina.com*



DPC LA JOSEFINA
OPERACIONES CORPORATIVAS

1953



“ *Mr. Jorge Quiroz Briseño founded an industry that started with traditional candies, basement for three generations , with experience, expertise and a great energy he launched what we are nowadays. ”*



Strategic Planning

Equipment and facilities available for your needs

Good trained labor

Low costs

ISO 9001:2000 working towards ISO 22000

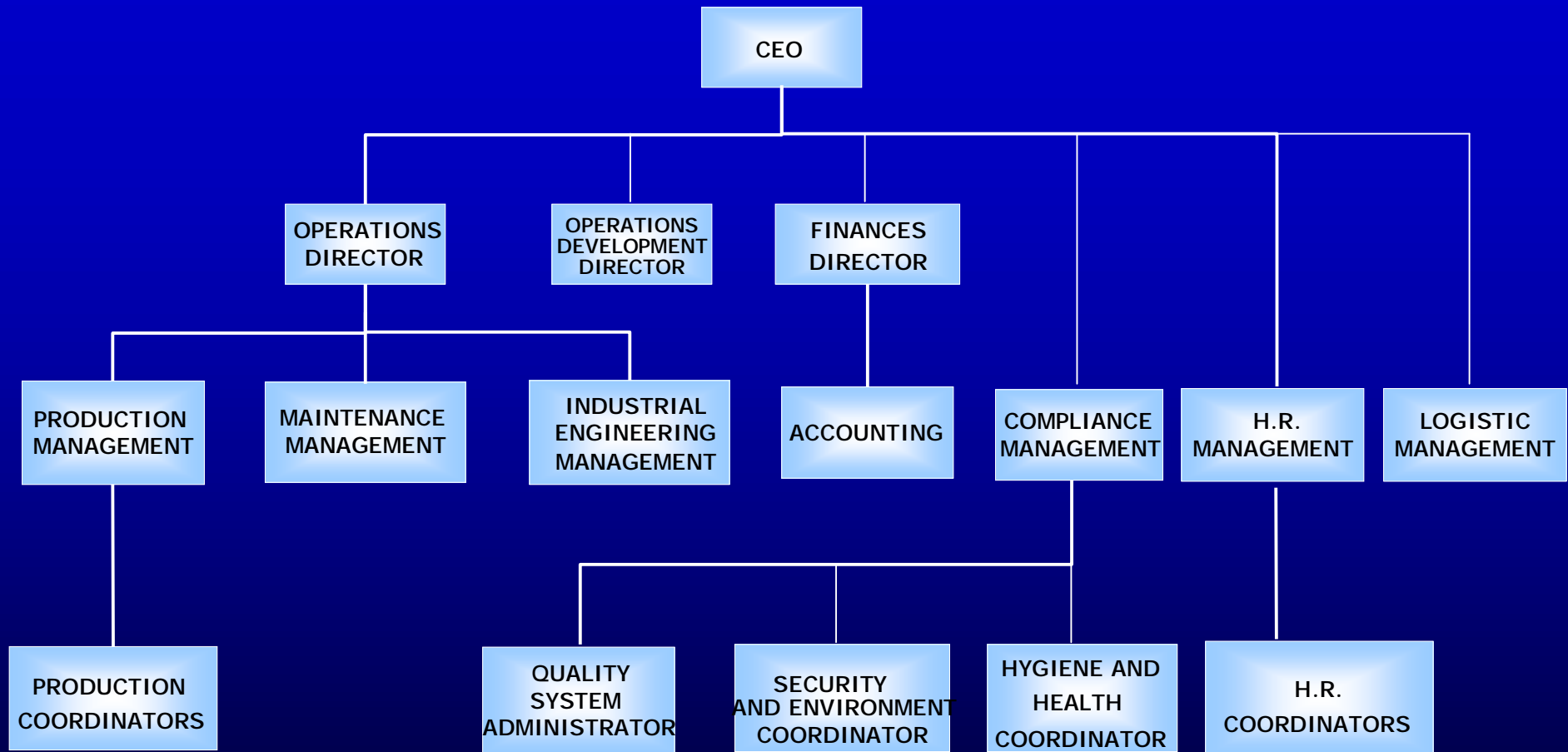
High Technology

Control and continuous improvement of processes

Today



Human Resources



Our personnel fulfills profiles for each position and are compatible with the company's values: Honesty, Commitment and Confidence. Our personnel is recruited and selected under systematic processes, they are evaluated before entering the production areas.





45 years of experience in the confectionery industry, 13 years on contract manufacturing makes us to be a leader company in our segment. We have developed a wide knowledge and expertise on the packaging technologies and processes markets.

Attending international exhibitions like: Pack Expo Chicago, Inter Pack Germany, Inter Phex New York we have reached a wide data base of providers of almost any kind of technology for the confectionery and packaging processes.

We are capable to produce and/or condition a wide range of products.

Production



Machinery

Machinery for different applications:

If your process requires special technology, we have knowledge, experience and capital to acquire it

We support your needs.



Thermoforming

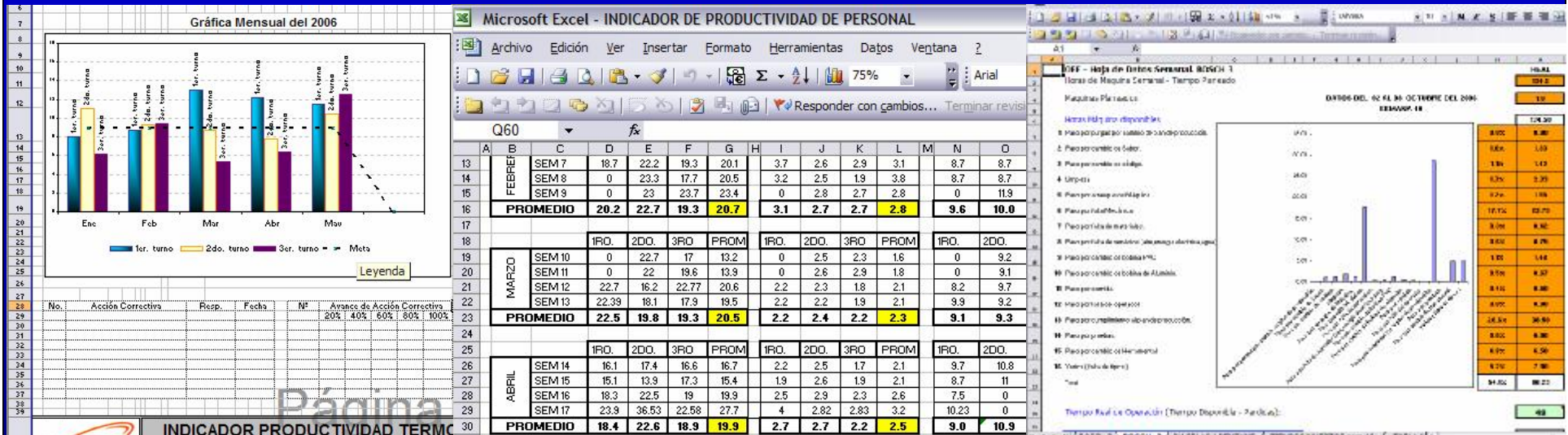


Flow Wrapping



Vertical form fill and seal Packing

All the processes are supported by coordinators, process engineers and quality engineers. The productivity is consequence of the effectiveness of our operations.



Productivity

Compliance



Compliance

Is our commitment that this company produce products complying with quality standards satisfying our clients and final consumers through continuous improvement, optimal resources usage and the ISO 9001:2000 norm.

Quality management, Security, Hygiene and Environment are in charge to fulfill all the internal and external rules that apply to us.

In the same way we support our community.



ISO 9001



Certifies that the Quality Management System established at

**Dulces y Productos de Cacahuete
La Josefina, S.A. de C.V.**

Calle 54 Poniente # 308, Puebla, México

complies with

ISO 9001:2000

and is hereby registered under the following scope:

**Food Products, Beverages and Tobacco & Pharmaceuticals
IAF # 03 & 13**

The scope of the Certification includes the Production, packing and conditioning of confectionery products and over the counter drugs.

CERTIFICATION DATE : 08/18/2006
REGISTRATION No. : R06081801
EXPIRATION DATE : 08/18/2009
ACCREDITATION REF : QMSEB0001-01



Marcela Navarro R

For the Certification Board: _____

THIS CERTIFICATE IS THE PROPERTY OF QSI AMERICA, INC., ORLANDO, FLORIDA
CERTIFICATION IS VALIDATED PERIODICALLY VIA SURVEILLANCE AUDITS
CS 9.0.0.0.2 - Version C - 05/19/2005





A Logistic Center with a warehouse support all the operations and services of multiple plants 24 hours a day.

We received, store and control many materials and finished goods supported on an ERP system and enabled personnel.

The integrity of the supply chain is our commitment.

Logistic



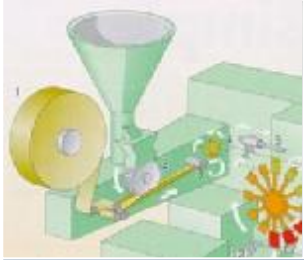


This is a division of DPC La Josefina committed to guard and track your supply chain.

- *Housing for more than 1,100 pallet locations.*
- *ERP System.*
- *We collect and deliver materials from and to our production plants.*
- *Operates 24 hrs. a day, 7 days a week.*
- *Highly committed trained personal.*
- *Trucks different sizes.*
- *We guarantee low costs.*

ADS LOGISTICS
ADMINISTRACION DE SISTEMAS LOGISTICOS





Maintenance

All the machinery and equipment are supported by specialized personnel; this team guarantees operations.



Infraestructure

Today we count with facilities under norm qualified for confectionery.

We control and trace all the operations supported on systems like an ERP and others.

Complying services are offered to our personnel.

Each plant has a warehouse to hold same day operations.



INFRAESTRUCTURA

TWO MANUFACTURING AND PACKAGING QUALIFIED PLANTS

EQUIPMENT

BLISTER PACKING

SHRINK PACK

LABELING

COLLECTIVE PACKING

FLOW PACK

PANNING & CARMEL

INDUSTRIAL SECURITY SYSTEMS

WAREHOUSING AND LOGISTICS SERVICES

TRANSPORT

SERVICE AREAS FOR PERSONNEL.

ALL NEEDED INDUSTRIAL SERVICES

ISO 9001:2000

SOFTWARE

ERP

PRODUCTION

INVENTORIES

ACCOUNTING

FINANCES

MRP

H.R.: ERP SOTEUS

HUMAN RESOURCES

MEDICAL SERVICE



Facilities



Environment controlled areas are available for products requiring this specification.

All areas have been designed according to specific needs to specific products.

We always take strong control of microbiological and product hygiene security.

Engineering projects are run for specific needs: structures, electrical, pneumatic, and basic services.

